



# ADEMCO COMPASS CONNECT SERVER

## Installation and Setup Guide

---

The ADEMCO Compass Connect Server is a series of software applications that facilitate the use of a local area network to perform control panel configuration downloads and remote control sessions. The software applications included are the Compass Connect Control Server and the Compass Connect Data Server. The installation and setup for each Server application is described in this document.

### Operation Description

A Compass communication session is initiated by Compass by sending a connection request to the Compass Connect Control Server. Included in the request is the IP address of the 7810iR-ent and the MAC address of the 7845i-ent at the installation site.

The Compass Connect Control Server then creates a Session ID and sends it to the Data Server and the 7810iR-ent specified by the IP address sent from Compass. The Session ID and the IP address of the Data Server are also sent to Compass.

Upon the next check-in of the 7845i-ent to the 7810iR-ent, the 7810iR-ent notifies the 7845i-ent of the pending connection request and gives it the Session parameters, and the Data Server IP address.

The Data Server then waits for both Compass and the control panel/7845i-ent to report in. After both have reported and the Session ID is verified, the Data Server “links” Compass and the control panel/7845i-ent and allows the Compass session to pass through it.

### System Requirements

The operating system required for the Compass Connect Server software is, Windows NT, Windows 2000 or Windows XP. The software will not work on Windows 95/98/ME.

Other system requirements are:

- Pentium-class machine, 500Mhz processor (1+ GHz recommended)
- CD or DVD disk drive, (required for installation)
- 10MB of available disk space (more recommended for logging purposes)
- 128MB of RAM (256MB recommended)
- Screen resolution of 800x600 or greater
- Full-time network connectivity
- Fixed IP Address (recommended)

### Compass Connect Control Server

#### General Description

The Compass Connect Control Server is a software application that controls the initiation of an IP download session between Compass and the control panel, through the Data Server. The Compass Connect Control Server:

- Notifies the Data Server and the 7810iR-ent that a session request was made by Compass.
- Sends the session parameters to the Data Server and the 7810iR-ent.
- Responds to Compass with the session parameters.

#### Installation and Setup

##### Installation Procedure

Before installing the software, you need to know the IP address of the machine that you will be running this application on, as well as the IP address of the machine that you will be running the Compass Connect Data Server on. In addition, you will need to verify that the default port numbers to be used (discussed later) are available on the machine. Contact your network administrator for assistance in verifying this if you are unsure.

Insert the Compass Connect Servers CD into the CD drive. This should launch the installation application. Choose the Control Server Installation option and follow the on-screen instructions.

### First Time Running the Control Server

The first time the Control Server is run, the configuration dialog screen appears. This screen shows the defaults for the IP Addresses and the port numbers. These defaults will be:

- Control Server IP Address: The IP address of the local machine. Unless you have multiple IP addresses on the machine, you should leave this. **This IP Address must be programmed in the Compass software as well. Do NOT use 127.0.0.1.**
- Control Server IP Port: 7770. **This entry is read-only.**
- Data Server IP Address: The IP Address of the local machine. If you intend to run both servers on the same machine, you should leave this. Otherwise, enter the IP address of the machine that will host the Data Server application. **Do NOT use 127.0.0.1.**
- Data Server IP Port: 8002. **This entry is read-only.**
- Data Server UDP Port: 5002. **This entry is read-only.**

Once the configuration options are verified, click OK to continue and the Control Server will launch.

### Interface Description (See Figure 1)

#### Menus

##### File

**Configure** – change the network configuration settings. Changes to these settings will only take effect after the application is terminated and restarted.

**Exit** – terminate the Control Server application.

##### Help

**About** – get version information about the Control Server application.

#### Status

**Startup Time** – Displays the time the application was started.

**Current Time** – Displays the current time.

**Configuration Settings** - This area of the screen displays the configuration settings currently being used by the Control Server.

**Activity Log** - This area of the screen displays the last 50 requests for sessions that the control server has processed.

**Log Files** - In addition to displaying activity on the screen, the software also logs the data to a log file, located in the \Logs folder of the Control Server installation folder. An individual log file is created for each day. The file names will be “cs”, followed by the 2-digit year, 2-digit month and 2-digit day of the date. For example, the log file for May 21, 2004 will be **cs040521.log**.

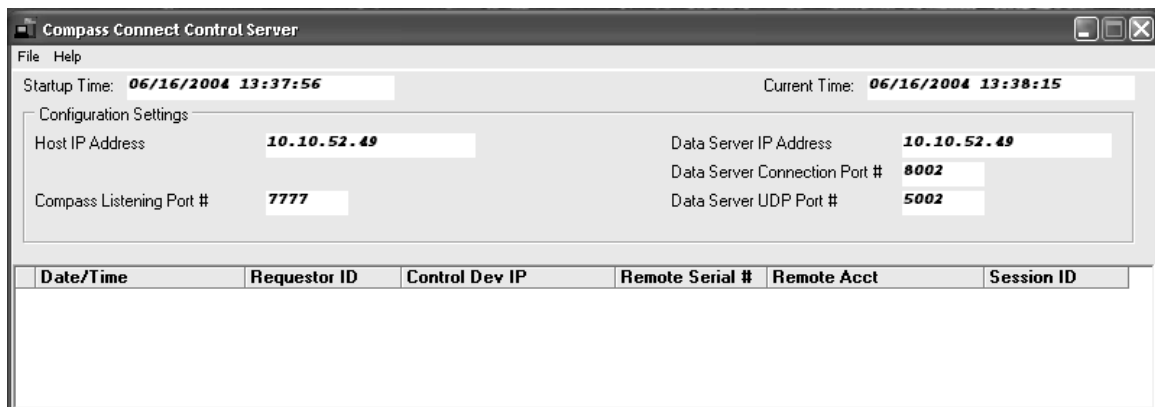


Figure 1

## Compass Connect Data Server

### General Description

The Compass Connect Data Server is a software application that “links” the Compass Downloader and the control panel/7845i-ent Internet/Intranet Communication module. The Compass Connect Data Server:

- Upon receiving a connection request from the Control Server, which includes a Session ID, waits for both Compass and the control panel/7845i-ent to report in.
- Verifies the Session ID from both and “links” them allowing the session data to pass through it.

### Installation and Setup

#### Installation Procedure

Before installing this software, you will need to know the IP address of the machine that you will be running this application on. In addition, you will need to verify that the default port numbers to be used (discussed later) are available on the machine. Contact your network administrator for assistance in verifying this if you are unsure.

Insert the Compass Connect Servers CD into the CD drive. This should launch the installation application. Choose the Data Server Installation option and follow the on-screen instructions.

#### First Time Running the Data Server

The first time the Data Server is run, the configuration dialog screen appears. This screen shows the defaults for the IP Addresses and the port numbers. These defaults will be:

- IP Address: The IP Address of the local machine. This address will be needed to properly configure the control server. **Do NOT use 127.0.0.1.**
- Data Server IP Port: 8002. **This entry is read-only.**
- Data Server UDP Port: 5002. **This entry is read-only.**
- Initial Connection Timeout: 180 Seconds.
- Inactivity Timeout: 30 Seconds.

Once the configuration options are verified, click OK to continue and the Data Server will launch.

#### Interface Description (See Figure 2)

##### Menus

###### File

**Configure** – change the network configuration settings. Changes to these settings will only take effect after the application is terminated and restarted.

**Exit** – terminate the Data Server application.

###### Help

**About** – get version information about the Data Server application.

##### Status

**Time** - This area of the screen displays the time the application was launched, as well as the current time.

**Configuration Display** - This area of the screen displays the configuration settings currently being used by the Data Server.

**Activity Log** - This area of the screen consists of 3 parts.

**Session Request Log** – This log lists any session requests that are received.

**Session Activity Log** – This log lists the activity of sessions, including the time of connection and disconnection for each participant in the session.

**Session Activity Status Grid** – This grid displays session activity data in a grid-style area, with each active session listed in an individual row.

**Log Files** - In addition to displaying activity on the screen, the software also logs the data to a log file, located in the \Logs folder of the Data Server installation folder. An individual log file is created for each day. The file names will be "ds", followed by the 2-digit year, 2-digit month and 2-digit day of the date. For example, the log file for May 21, 2004 will be named **ds040521.log**.

The screenshot shows the 'Compass Connect Data Server' application window. At the top, there is a menu bar with 'File' and 'Help'. Below the menu bar, configuration parameters are displayed in a grid-like format:

- Startup Time: 08/19/2004 11:59:34
- Current Time: 08/19/2004 12:01:05
- IP Address: 10.10.53.83
- IP Port #: 8002
- UDP Port #: 5002
- Connect Timeout (sec): 180
- Inactivity Timeout (sec): 30

Below the configuration parameters, there are two large empty rectangular areas, likely for displaying logs or detailed data. At the bottom of the window, there is a table with the following columns and data:

	Device S/N	Session ID	Host ID	Remote ID	Bytes(H,R)	Host IP	Remote IP
1	000000000000	0000	0	0	0,0	0.0.0.0	0.0.0.0
2	000000000000	0000	0	0	0,0	0.0.0.0	0.0.0.0
3	000000000000	0000	0	0	0,0	0.0.0.0	0.0.0.0
4	000000000000	0000	0	0	0,0	0.0.0.0	0.0.0.0
5	000000000000	0000	0	0	0,0	0.0.0.0	0.0.0.0
6	000000000000	0000	0	0	0,0	0.0.0.0	0.0.0.0
7	000000000000	0000	0	0	0,0	0.0.0.0	0.0.0.0

Figure 2

# Honeywell

165 Eileen Way, Syosset, New York 11791

Copyright © 2004 Honeywell International Inc.

[www.honeywell.com/security](http://www.honeywell.com/security)



K10178 10/04 Rev A